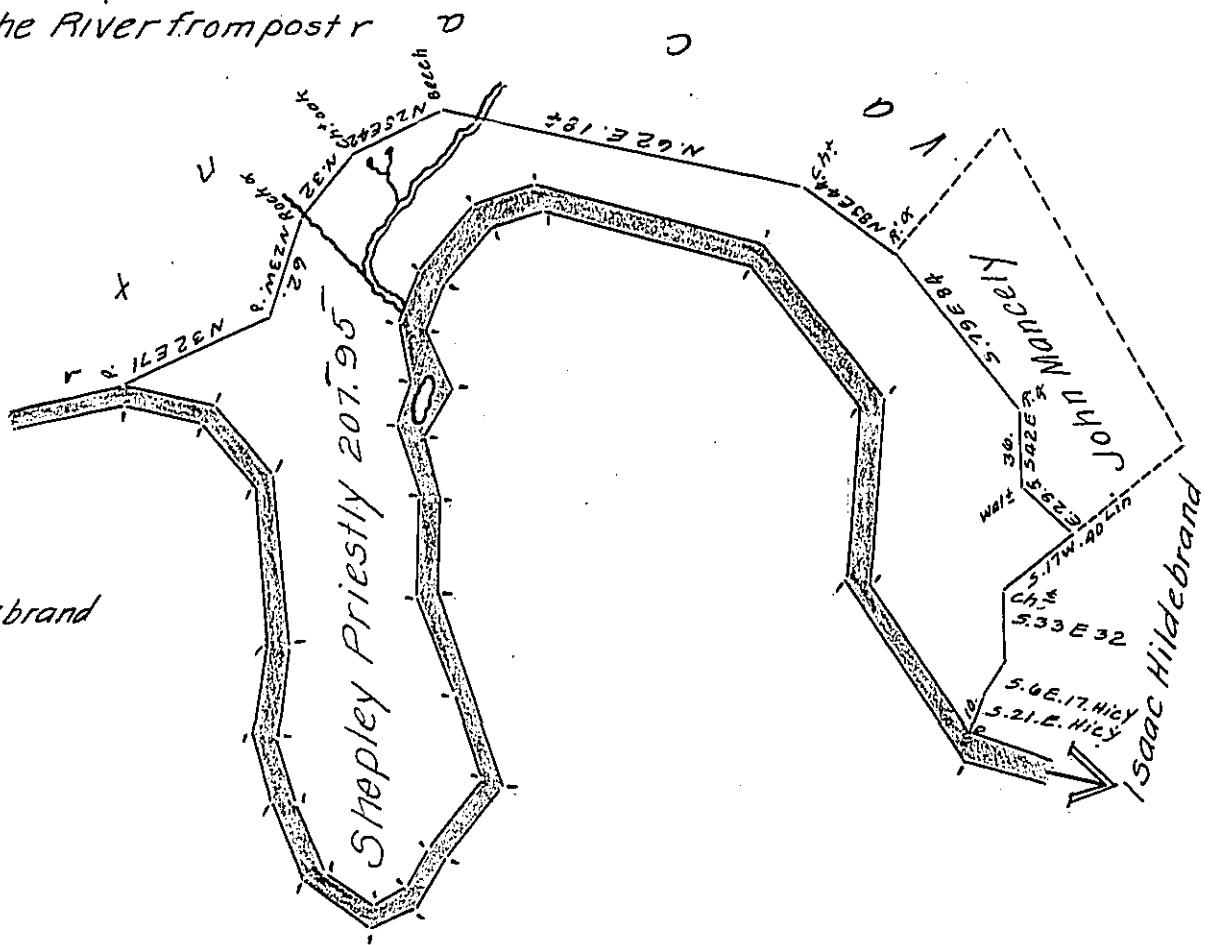


Courses & distance down the River from post r

- N 82 W 40
- N 45 W 74
- N 32 W 40
- N 54 W 28
- N 65 W 34
- S 87 W 26
- S 19 W 16
- S 18 E 18
- SOUTH 40
- S 57 E 40
- S 61 E 46
- S 40 E 44
- S 56 E 34
- S 26 E 20
- S 53 E 28
- S 20 E 24
- SOUTH 40
- S 33 W 30
- S 63 W 166
- N 77 W 86
- N 35 W 78
- N 75 W 78 to post of Isaac Hildebrand
- 1030 p³



Situate on the South Side of Conemough River in Conemough Township Cambria County. Surveyed on the 10th & 11th of December 1830. in pursuance of a Warrant dated on the 2nd day of Dec^r A. D. 1830.

Containing two hundred & Seven Acres & ninety five ps. & allowance by

To Jacob Spangler Esq^r }
 Surveyor General

W^m O'Keefe

D.S.

IN TESTIMONY that the above is a copy of the original remaining on file in the Department of Internal Affairs of Pennsylvania, made conformably to an Act of Assembly approved the 16th day of February, 1833, I have hereunto set my Hand and caused the Seal of said Department to be affixed at Harrisburg, this twenty sixth day of September 1910.

Nancy Howell
 Secretary of Internal Affairs.